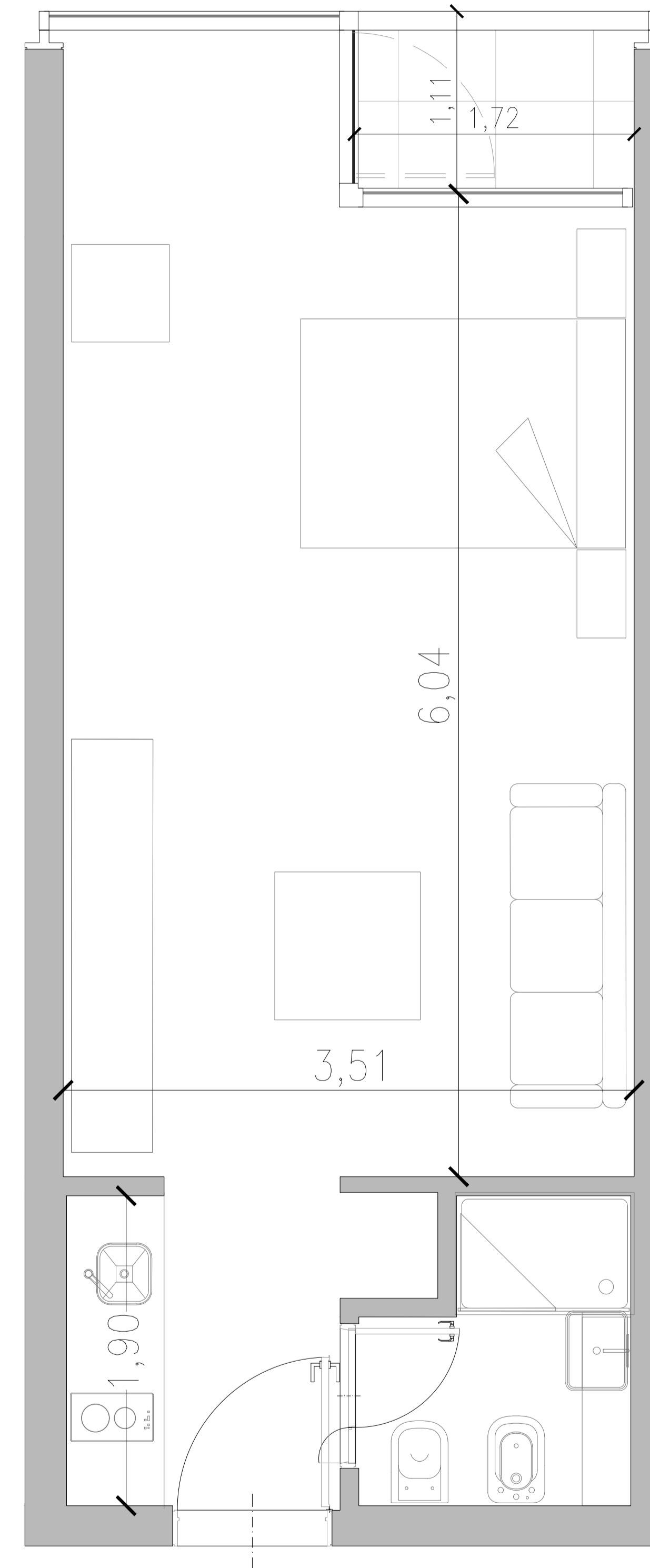
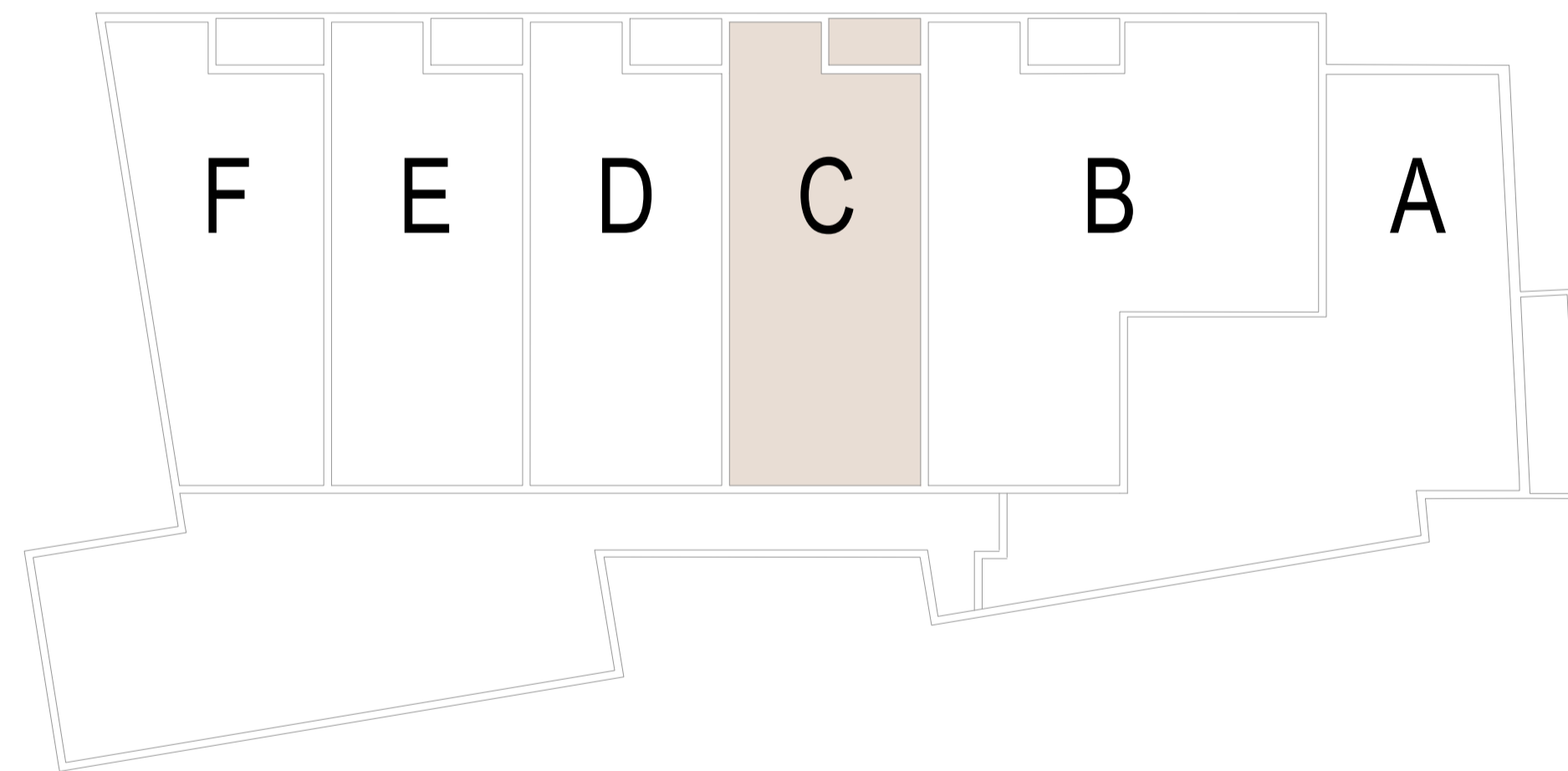
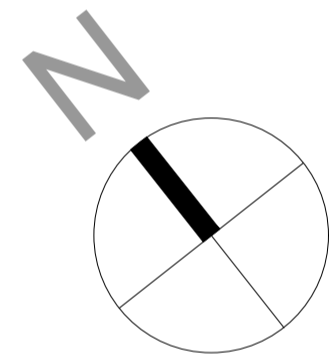


# 32.07 m<sup>2</sup>

(sup. cub. 30.17m<sup>2</sup> + sup. balcón 1.90m<sup>2</sup>)

-ESTAR C/ COCINA INTEGRADA (3.51m x 6.04m)

-BALCÓN (1.11m x 1.72m)



## UNIDAD C

PISO 1,3,5 Y 7