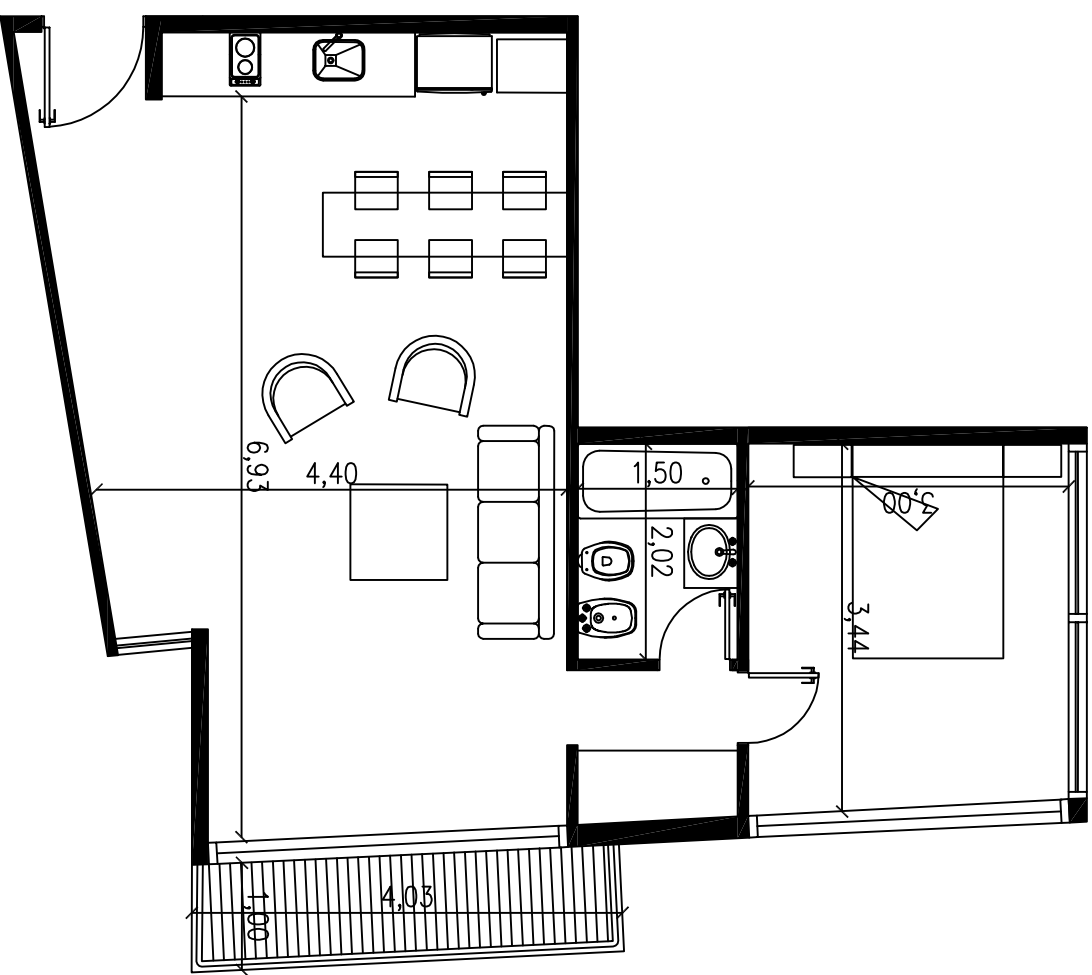
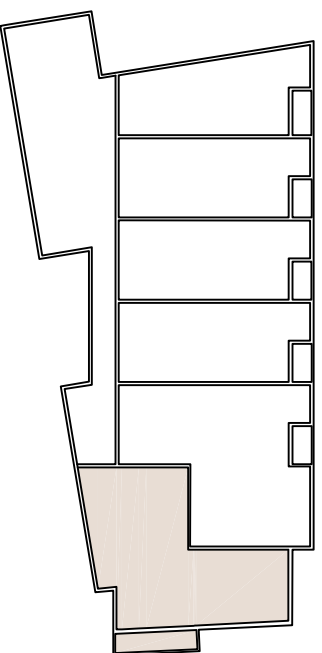
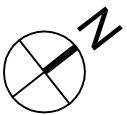


55,60 m²

(sup. cub. 51.60m² + sup. balcón 4.00m²)

- DORMITORIO (3.44m x 3.00m)
- ESTAR/COMERDOR C/ COCINA INTEGRADA (4.40m x 6.93m)
- BALCÓN (4.03m x 1.00m)



UNIDAD A
PISO 1,3,5 Y 7