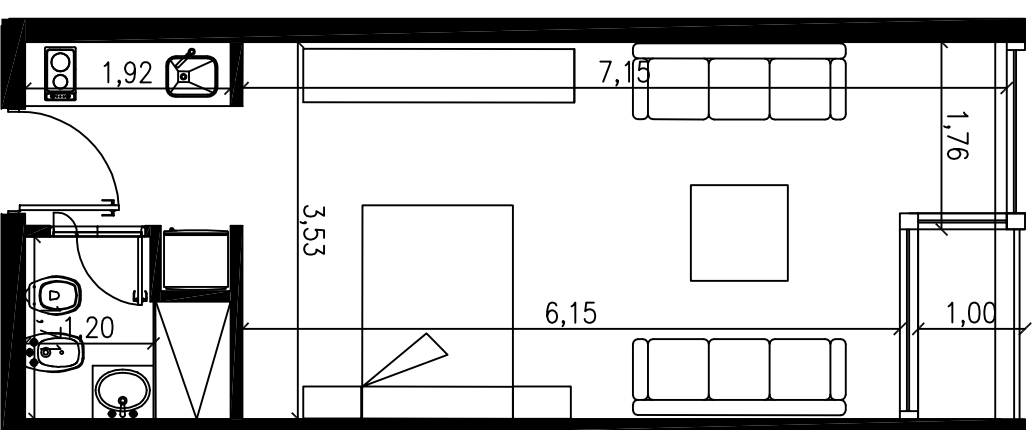
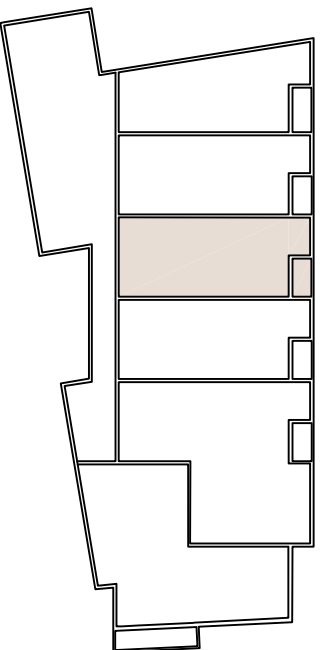
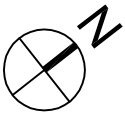


# 35,38 m<sup>2</sup>

(sup. cub. 33.60m<sup>2</sup> + sup. balcón 1.78m<sup>2</sup>)

-ESTAR C/ COCINA INTEGRADA (3.53m x 6.15m)  
-BALCÓN (1.00m x 1.78m)



UNIDAD D  
PISO 1,3,5 Y 7